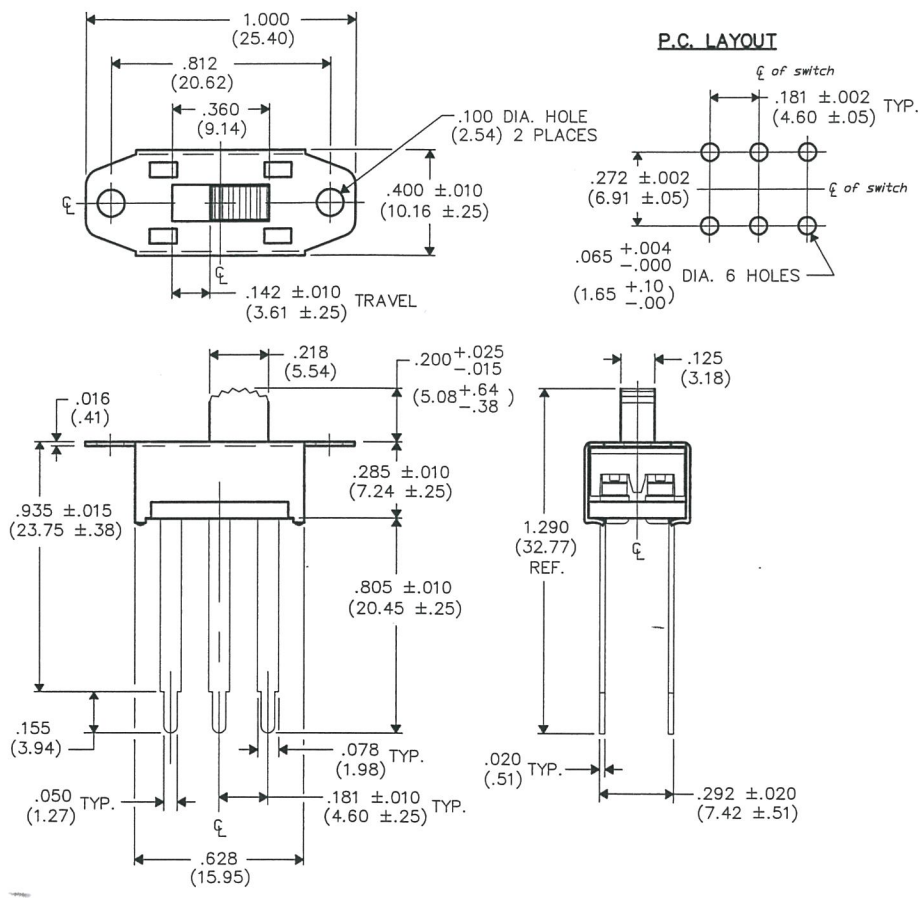


F  
 D  
 C  
 B  
 A

THIS INFORMATION IS CONFIDENTIAL AND PROPRIETARY TO CV INDUSTRIES INCORPORATED AND ITS AFFILIATES. IT MAY NOT BE DISCLOSED TO ANYONE, OTHER THAN CV INDUSTRIES PERSONNEL, WITHOUT WRITTEN AUTHORIZATION FROM CV INDUSTRIES INCORPORATED, SOUTHAMPTON, PENNSYLVANIA USA.

DIMENSIONS IN INCHES (MILLIMETERS) Dwg. No.  
 DO NOT SCALE DRAWING ..... GF-126-0322



ELECTRICAL RATING:  
 .5A. AC DC 125V

LISTING:  
 UNDERWRITERS  
 LABORATORIES

1 2 3 4 5 6 7 8 9 10

B-FORMAT 2002

**REVISIONS**

REDRAWN. ADDED RATINGS. 1  
 DGW 9-26-13  
 SEP 8 0 2013

**CW INDUSTRIES**  
Southampton, Pa. 18966

**TOLERANCES UNLESS OTHERWISE SPECIFIED**

2 Place Decimal $\pm .010$	METRIC
3 Place Decimal $\pm .005$	1 Place Dec. $\pm .25$ mm
Angles ..... $\pm 1^\circ$	2 Place Dec. $\pm .13$ mm

Made for: CW IND.  
 Drawn by: DGW 9-26-13  
 Checked by: G. Guld 9-30-13  
 Approval: *[Signature]* 9/30/13

Title: **SWIDGET ASSEMBLY**

Division: **SWITCH**

Dwg. No. **GF-126-0322**

**MASTER**