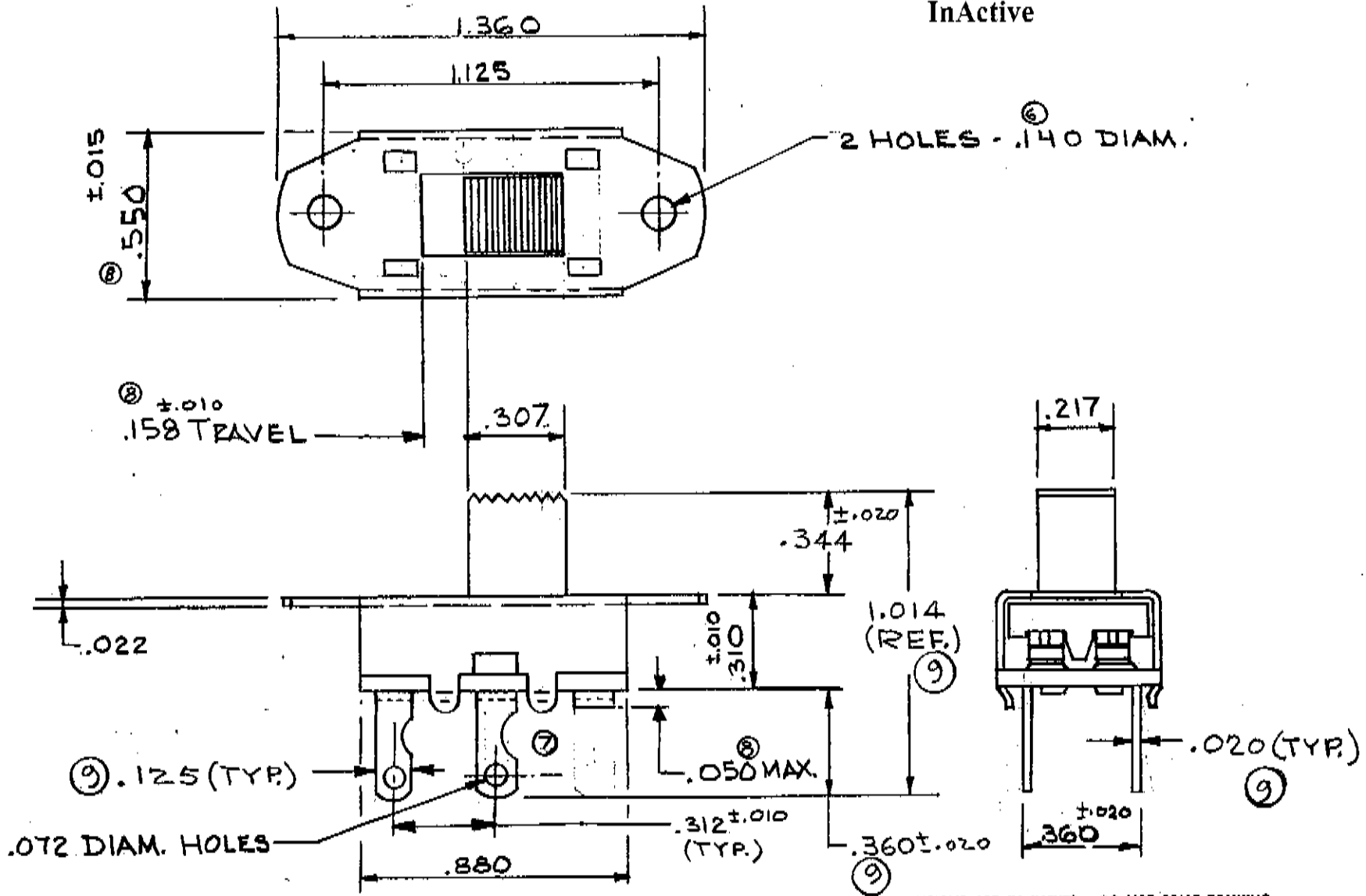


InActive

GF-325-0000



ALL SCREW THREADS TO BE CLASS 2 FIT (AMERICAN STANDARDS) UNLESS OTHERWISE SPECIFIED. DIMENSIONS ARE IN INCHES. DO NOT SCALE DRAWING.

REVISIONS	DATE	DESCRIPTION
0	ENG. AP. 4-18-61	
4		REDRAWN, ADDED CUT TERM. .344 WAS .320, .510 WAS .312, .670 WAS .680, .1014 WAS 1.000, .480 WAS .435 - 3-21-66 RM. PJD
5		WAS .480
6		WAS .525 .140 WAS .136 ADDED DETENT BUMPS 12-5-67
7		ADDED 1/16" ON TERM. P.S. 4-23-70
8		.550 WAS .543. REV. TERMINALS. ADDED TRAVEL P.S. 1-11-73
9		1.014 (REF.) WAS 1.014 \pm .020 ADDED .125 (TYP) .360 \pm .020 .020 (TYP.) J.V. 8-29-73

PDF File Made	VARIATIONS ON FINISHED DIMENSIONS UNLESS OTHERWISE MARKED		
	BASIC DIMENSIONS	FRACTIONAL DIMENSIONS	DECIMAL DIMENSIONS
UP TO 6	$\pm \frac{1}{64}$		$\pm .005$
ABOVE 6 TO 24	$\pm \frac{1}{32}$		$\pm .010$
ABOVE 24	$\pm \frac{1}{16}$		$\pm .015$
ANGULAR DIMENSIONS	$\pm 1/2^\circ$		

SWITCH
D.P.-S.T.

FIRST MADE FOR

DRAWN BY G.H.

CHECKED BY E.J.O.

Continental-Wirt Electronics Corp. PHILA., PA. 19144

GF-325-0000