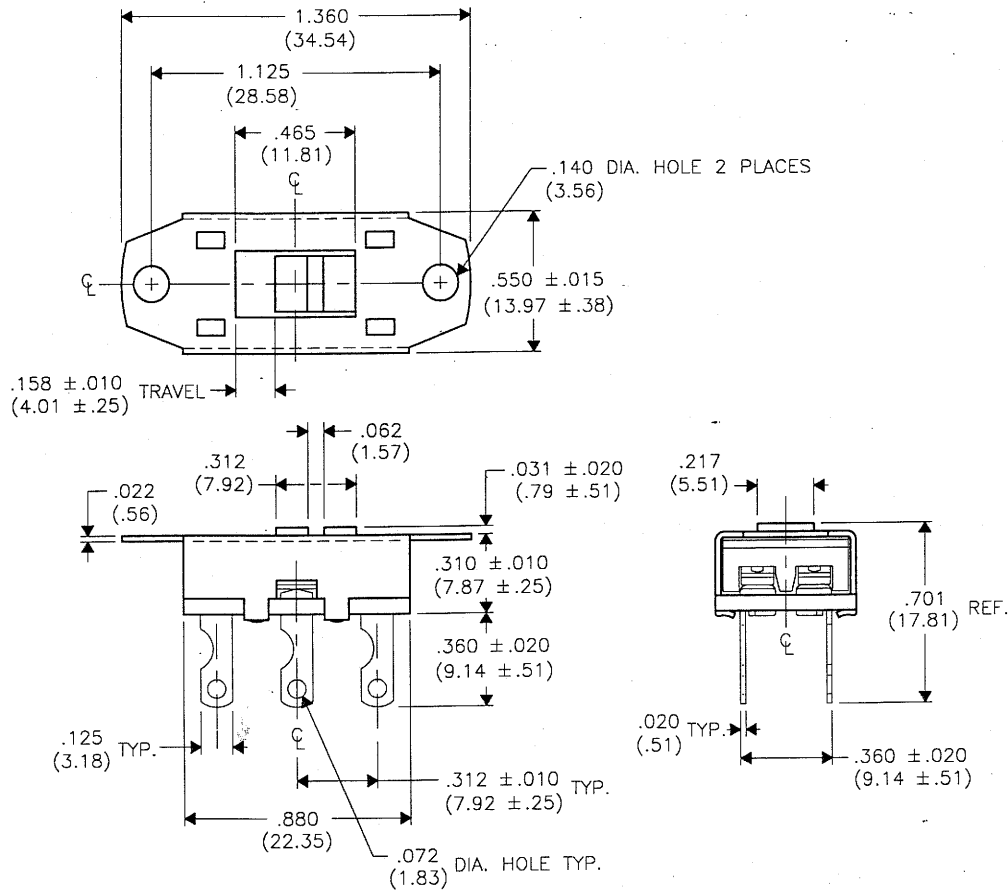


DIMENSIONS IN INCHES (MILLIMETERS)  
DO NOT SCALE DRAWING .....

Dwg. No.

GF-326-0149



**MATERIALS:**

- BUTTON** - Nylon 6/6, BK-1
- HOUSING** - Cold Rolled Steel/Zink Plated
- CONTACT** - Phos. Bronze, C (Copper Alloy #521)
- SPRING**
- CONTACT** - Extra Hard #194 Alloy,  
**SHOE** Gold Plate .000010 thk. min. over  
Nickel Plate .000050 thk. min.
- TERMINAL** - CDA 110 Copper Alloy,  
Gold Plate .000010 thk. min. over  
Nickel Plate .000050 thk. min.
- TERMINAL** - NEMA XP  
**BOARD**

FORM-B

**REVISIONS**

0	RELEASED
	DGW 9-19-95
	SEP 25 1995

PDF File Made

ID. No.: SAFO215A

**CW INDUSTRIES**  
Southampton, Pa. 18966

TOLERANCES UNLESS OTHERWISE SPECIFIED

2 Place decimal ±.010	METRIC
3 Place decimal ±.005	1 Place dec. ±.25mm
Angles ..... ± 1°	2 Place dec. ±.13mm

Made for: CW IND.

Drawn by: DGW 9-19-95

Checked by: G. GULD 9-22-95

Approved: G. GULD 9-22-95

Title:

SWITCH  
ASSEMBLY  
D.P. - D.T.

Division:

SWITCH

Dwg. No.

GF-326-0149