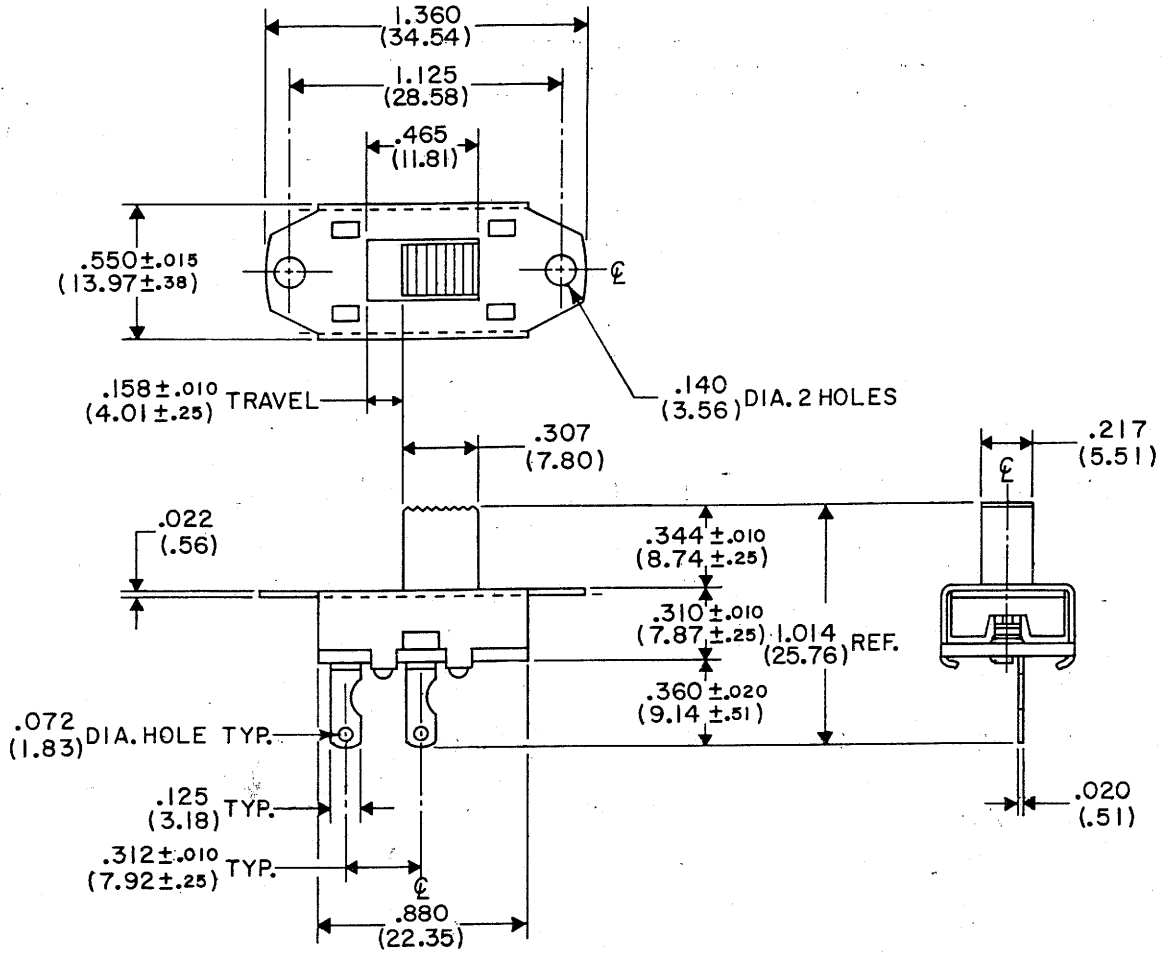


DRAWING NUMBER
GF-323-0000

NOTE:
DIMENSIONS IN () ARE IN MILLIMETERS.



REVISIONS
REMOVED END TERMINAL
B.D. 6-17-85
J.W. 1 & 1005
C. 12.3.

PDF File Made

METRIC TOLERANCES UNLESS OTHERWISE SPECIFIED
1 PLACE DECIMAL ± .25 MM
2 PLACE DECIMAL ± .13 MM

DIMENSIONS ARE IN INCHES. DO NOT SCALE DRAWING.

CW INDUSTRIES
WARMINSTER, PA. 18974

TOLERANCES UNLESS OTHERWISE SPECIFIED
2 PLACE DECIMAL — ± .010
3 PLACE DECIMAL — ± .005
ANGLES — ± 1°
FRACTIONS — ± 1/64

MADE FOR CIRTCELE NREHTRON
DRAWN BY Leo Webber DATE 5-15-80
CHECKED BY [Signature] DATE 5/17/80
ENG. APPR. DATE

DIVISION SWITCH
SWITCH ASSEMBLY
S.P.-S.T.
DRAWING NUMBER GF-323-0000